

CAPABILITY STATEMENT

OVER 35 YEARS OF SUCCESSFUL SERVICE IN THE PILBARA

Our business has a long standing history of success in the Pilbara, driven by our commitment to ZERO HARM and knowledge of the region and industry. We value our clients and partnerships, and are proud of our impeccable safety record.

Family owned since 1976

BYBLOS CONSTRUCTIONS is a large privately owned Western Australian company, specialising in providing comprehensive services to the mining, civil and construction industries.

We know what it takes to **succeed**



Driven.
Dedicated.
Dependable.

A local, experienced team.



Our Mission ensures quality work.

At Byblos Constructions, our mission is to build enduring structures that stand as testaments to quality, innovation, and sustainability while dedicated to delivering quality and value to our clients.

Committed to excellence in the construction industry, we strive to exceed the expectations of our clients by delivering high quality projects on time, within budget, and with safety as our main focus.

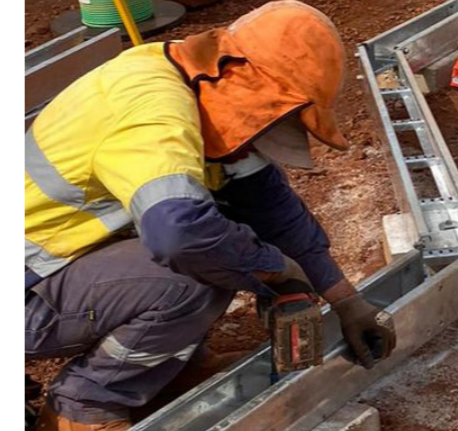
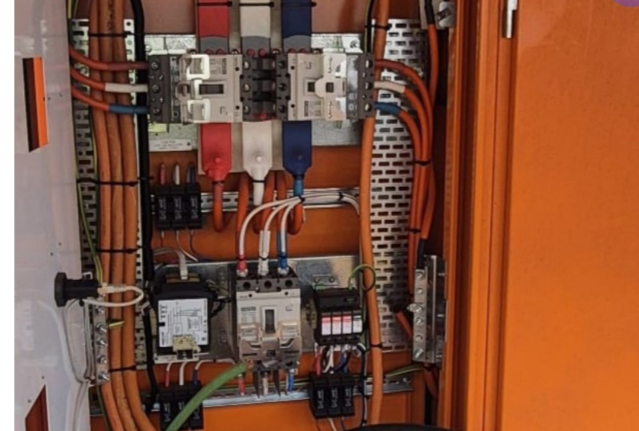
Our mission extends beyond the construction site, we believe in building lasting relationships with our clients, suppliers and the communities we operate within. Our mission is to build trusted partnerships offering expertise, reliability, and a shared vision for success.

Our team of skilled professionals embraces a culture of collaboration, integrity and continuous improvement. In everything that we do, we are guided by our core values of integrity, safety, innovation and a passion for excellence.



Our Areas of Operation





CAPABILITIES

- Capital Projects
- Construction, Building Refurbishment & Maintenance
- Civil Works
- Concreting & Formwork
- Electrical
- Plumbing
- Fabrication
- Controlled Waste Removal, Management & Disposal
- Plant Hire & Machine Operating
- Carpentry
- Cabinet Making
- Asbestos Removal
- Demolition
- Painting
- Tiling
- Glazing
- Landscaping, Slashing & Tree Lopping
- Refrigeration Mechanics
- Floor Coverings
- Cleaning



PREVIOUS PROJECTS



YANDICOOGINA VILLAGE REFURBISHMENT PROJECT

The Yandi Village refurbishment project, led by Byblos Constructions, significantly improved living conditions for FIFO workers by renovating 650 rooms across two villages. The extensive upgrades included structural enhancements, new flooring, cabinetry, and updated plumbing and electrical systems. With careful planning to minimise disruption, the project prioritised safety and environmental measures, ensuring a high standard of living while supporting the region's mining operations. Comprehensive warranties and a 12-month defects liability period underscored the project's commitment to quality.



SHIRE OF TOM PRICE BIKE PARK UPGRADE

Byblos was contracted to upgrade the Shire Bike Park, enhancing it for local BMX enthusiasts and children learning to ride. The project featured a new pump track, a learn-to-ride track, and an expansion of dog park facilities. We improved the landscape with new elements, added shade structures for user comfort, and upgraded electrical systems for evening use. Additionally, enhancements to water feeds, drainage, and seating improved functionality. The completed project has transformed the Shire Bike Park into a vibrant community hub, promoting active lifestyles and providing a safe space for recreation.



PARABURDOO CENOTAPH REDEVELOPMENT PROJECT

The Paraburdoo Cenotaph Redevelopment project involved landscaping, civil engineering, and the installation of commemorative features. Key tasks included planting Pilbara ghost gum trees, updating garden beds, and implementing a revised irrigation plan. Civil works comprised removing outdated structures and preparing the site for new installations, including a concrete path and footings for sculptures and signage. The project enhanced the site's aesthetics and historical significance, showcasing Byblos Group's expertise in managing complex redevelopment tasks.

RTIO WORK CATEGORIES

- **Construction** (Building)
- **Construction** (Civil)
- **Electrical** (General)
- **Electrical** (General/Communications)
- **Electrical** (Transmission/Cabling)
- **Environmental** (Waste Disposal Contractor)
- **Environmental** (Waste Disposal Liquids)
- **Environmental** (Waste Disposal – Hazardous Substances)
- **Maintenance** (Building Maintenance Contractor)
- **Maintenance** (Plumbing Maintenance)
- **Maintenance** (Plant Maintenance Service Water Treatment)
- **Maintenance** (Plant Maintenance Service General)
- **Labour Hire** (Temp Labour/Industrial)
- **Specialised Services** (Grounds Maintenance Service)
- **Office/Others** (Cleaning and or Detailing Contractors)

LICENCES

- **Registered Builder 11477**
- **Plumbing Contractors Licence PL6538**
- **Controlled Waste Licence T00286**
- **Electrical Contractors Licence EC010470**
- **Restricted Asbestos WARA 133**

Why work **with us**

Choosing to work with Byblos Constructions is an investment in excellence, innovation, and collaborative success. With a rich legacy of delivering exceptional construction solutions, our commitment to quality and client satisfaction sets us apart.

At Byblos Constructions, we prioritise your vision, transforming ideas into reality with precision and creativity. Our experienced team of planners, and construction professionals collaborate seamlessly to bring forth innovative designs and ensure the successful execution of projects, from residential to commercial and infrastructure developments.

We take pride in our client-centric approach, where your goals become our mission. By choosing us, you gain a partner dedicated to transparent communication, on-time delivery, and adherence to budget constraints. Our robust project management and consultation services ensure a streamlined process, allowing you to focus on your core objectives while we handle the intricacies of construction.

Safety and sustainability are at the core of our values. Byblos Constructions implements stringent quality assurance measures and integrates green building solutions to minimise environmental impact.

With us, you're not just investing in construction; you're choosing a collaborative journey towards building legacies. Experience the Byblos advantage — where integrity, innovation, and reliability converge to craft extraordinary spaces and enduring relationships. Your vision, our expertise — together, we build the future.



Leading **Western Australia**

OUR VISION

Our vision is to be a leading Western Australian construction company, known for delivering excellence to our clients and stakeholders.

We strive to be effective, efficient, innovative and professional. It is our goal to exceed the expectations of our clients and continuously improve all areas of our business to ensure ongoing success.

OUR COMMITMENT

At Byblos Constructions, the well-being of our team members, clients, and all project stakeholders is paramount. Our unwavering commitment to Health and Safety (H&S) forms the foundation of our operations. We cultivate a safety-first culture, instilling the importance of individual responsibility in every team member.

Byblos Constructions adheres to the highest safety standards and regulations. Our works are executed with meticulous attention to detail, implementing stringent safety protocols to mitigate risks and create secure work environments.

We believe in continuous improvement and actively seek feedback to enhance our safety practices.

OUR SERVICES AT A GLANCE



CIVIL WORKS

Our team specialises in delivering high-quality civil works, focusing on infrastructure projects that meet community needs and surpass expectations.



CAPITAL PROJECTS

We have established ourselves as a leader in the construction and refurbishment of various capital projects, with a particular focus on mining infrastructure.



CONSTRUCTION

We are committed to offering exceptional construction solutions, aimed at crafting spaces that resonate with excellence and innovation for our clients.



PLANT HIRE

We provide a comprehensive range of plant hire options, designed to support any project with the right equipment for efficiency and success.



CONTROLLED WASTE

We are committed to offering exceptional construction solutions, aimed at crafting spaces that resonate with excellence and innovation for our clients.



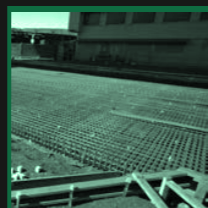
ELECTRICAL

We provide expert electrical services with skilled, licensed electricians, specialising in mining compliance and quality, guaranteeing project excellence.



PLUMBING AND GAS

Our team provides exceptional plumbing services and is committed to delivering quality, efficiency, and compliance with industry standards.



MINE SERVICES

We have a strong track record serving major mining companies, understanding their needs, and exceeding expectations through effective project execution.



LABOUR HIRE

Looking to hire labourers? For over 35 years, our professionals have delivered diverse building projects in WA, specialising in commercial, residential, industrial, and mine infrastructure.

Civil Works

A PROVEN SERVICE PROVIDER

For many years, we have been engaged as a trusted and preferred contractor to locate, excavate, remove and replace utility services in the Pilbara. Our long history of civil works in the region means there is no better equipped team to tackle the demands of your project. Our clients choose to engage us first, as we bring a level of consistency and confidence that lets them know their project is in safe hands.

CIVIL WORKS SERVICES INCLUDE:

- Non-destructive service location
- Water main repairs & installations
- Asbestos water main removal & replacement
- Sewer main replacement & installations
- General earthworks
- Formwork & concreting services

Labour & Materials

Our long-standing involvement in civil works within the Pilbara region makes us a reliable partner for your project's specific needs. Our clients rely on us because of our consistent track record in handling projects with a high level of professionalism and reliability.

The Pilbara's tough environment and terrain require practical and smart solutions, especially for locating and replacing services. Our leadership in using non-destructive hydro-vacuum excavation technology for service location demonstrates our commitment to efficiency and safety. This method enables us to accurately locate underground utilities such as communications, sewer, water, hydrocarbon, and electrical lines without causing damage.

Multi-Field Work

We offer a range of civil works services, from non-destructive service location to repairing and installing water mains, removing and replacing asbestos water mains, replacing and installing sewer mains, and conducting general earthworks. Our focus is on applying our expertise and innovative techniques to address the challenges of the Pilbara, ensuring that we deliver practical and responsible solutions.





Capital Projects

EXPERTISE IN MINE SITE AND INFRASTRUCTURE DEVELOPMENT

Byblos Construction's new Projects Division has established leadership in the construction and refurbishment of mining infrastructure. Our extensive portfolio highlights our expertise in delivering tailored, high-quality, reliable, and efficient solutions for the mining industry, including:

Mine Site Village Refurbishments

We upgrade living quarters, recreational, and communal spaces, prioritising safety, durability, and sustainability to enhance workforce comfort and morale.

Mine Site Wet and Dry Mess Facilities

Byblos Construction ensures that all ablution facilities are built to the highest standards of cleanliness and functionality. Our designs consider the needs of large workforces, incorporating durable materials and efficient systems to maintain hygiene and comfort.

New Installations and Refurbishments

We manage both new construction and the modernisation of mining facilities using advanced techniques to meet operational needs.

Offices

We create office spaces that support administrative functions, meetings, and collaborative work for efficient management.

Ablutions

We build high-standard ablution facilities, focusing on cleanliness, durability, and comfort for large workforces.

In-pit Infrastructure

We develop robust drainage systems and service installations to enhance operational efficiency and safety.

Crib Rooms and Pre-start Facilities

We provide comfortable, accessible spaces for breaks and pre-shift preparations, prioritising safety and ergonomics.

ONSITE IN-GROUND SERVICES & INFRASTRUCTURE:

• HV and LV Electrical Systems

We install reliable high and low-voltage electrical systems for operational and safety needs.

• Water Systems

We design and install potable and non-potable water systems for various uses across the site.

• Wastewater Treatment

We construct systems that treat effluent in compliance with environmental regulations.

• Electrical Infrastructure

We supply and install robust electrical infrastructure, including main switchboards and distribution boards, ensuring reliable power across mining operations.



Yandicoogina Village Refurbishment Project

Client: Sodexo

Sep 2022 – Feb 2025

The Yandicoogina Village in the Pilbara, commissioned in 1998 as a construction village, required refurbishing 650 rooms due to its poor original condition. The project scope included supplying new materials, project management services, machinery, labour and equipment for the internal refurbishment of FIFO workers rooms, covering demolition, structural works, painting, cabinetry, vinyl, plumbing, mechanical and electrical works.

Hope Downs 1 Central Facilities Refurbishment

Client: Sodexo

Nov 2023 – May 2025

The Hope Downs 1 facilities expansion involved in the construction of 26 modular buildings in conjunction with a local Modular Building suppliers. The state-of-the-art kitchen and mess area is being expanded and refurbished to accommodate an expected increase in camp capacity. The project involves closing the central facility for construction, deploying temporary dining areas, and upgrading electrical, hydraulic, and mechanical systems, along with constructing new dining and crib rooms and installing cool rooms.

Bina Bina In-pit Facilities

Client: RTIO Sus Cap

Feb 2024 – Nov 2024

Located 219km from Newman, WA, the Bina Bina Crib Facility project expanded undersized facilities to support mining personnel. The project delivered larger office spaces with a total of 22 modular buildings, supplied by a local Modular Building supplier, to accommodate present and future mine operations. The project included a 62-person office, meeting rooms, a 12-person training room, a 60-person crib, locker rooms for 480 persons, restrooms, an ice room, and amenities like concrete pathways, a breezeway structure, unsealed LV parking, wheel ruts, and a bus drop-off point.

Jundunmunnah Village Refurbishment Project

Client: Sodexo

Sep 2024 – Dec 2026

Jundunmunnah Village, located in the west Pilbara region, primarily accommodates a full-time workforce and serves as an overflow camp. Established in 2005 with 700 rooms, the village requires refurbishment as the rooms have surpassed their intended asset life. The project involves supplying new materials, project management, and various refurbishment tasks such as demolition, structural work, painting, cabinetry, plumbing, mechanical, and electrical work.



Construction

WHY CONSTRUCTION

Byblos Group boasts over three decades of delivering high-quality building projects, demonstrating our capacity to evolve and introduce a broad spectrum of products and services across Western Australia. Esteemed clients, including Rio Tinto, the Shire of Ashburton, and the Department of Housing, have entrusted

us with significant assignments throughout the Pilbara's inland and coastal areas.

Our expertise spans residential refurbishments to commercial and industrial developments, underpinned by a dedication to excellence and service that has solidified our reputation for fulfilling project requirements efficiently, punctually, and beyond expectations.



CONSTRUCTION SERVICES:

- Plumbing
- Carpentry
- Cabinet making
- Painting
- Tiling
- Concreting
- Machine operating
- Landscaping
- Asbestos removal
- Glazing
- Construction, risk & safety management

We're Equipped for all Projects

We offer a range of civil works services, from non-destructive service location to repairing and installing water mains, removing and replacing asbestos water mains, replacing and installing sewer mains, and conducting general earthworks. Our focus is on applying our expertise and innovative techniques to address the challenges of the Pilbara, ensuring that we deliver practical and responsible solutions.

Plant Hire

A DIVERSE AND COMPLIANT FLEET

- Cat, Hitachi & Komatsu hydraulic excavators: 1.7t, 1.8t, 3t, 4t, 5t, 6t, 8t, 14t
- Cat & John Deere skid steer loaders / tracked loaders with various bucket, sweeping, slashing and auguring attachments
- Cat Backhoes
- Seca Jetspray machines
- Vermeer / No-Dig Hydro-vacuum excavator systems (Potholers & Vac Truck)
- Nissan & Mitsubishi waste trucks: 10,000L, 12,000L & 14,400L
- Fully mine site compliant fleet of light trucks, tag trailers & plant trailers
- Fully mine site compliant fleet of light vehicles

Earth Movement

At Byblos Group, our comprehensive range of plant equipment for hire is designed to meet the diverse needs of any project. Our inventory includes Cat and Hitachi excavators with capacities from 1.8 tonnes to 14 tonnes, Cat and John Deere Skid steer loaders, versatile Cat Backhoes, innovative No Dig and Vermeer Hydro-vacuum excavation systems for precision digging, a variety of tip trucks for efficient material transport, and skip bin trucks alongside skip bins for effective waste management.

Machinery & Other Equipment

We take pride in our mine site-compliant fleet, ensuring that all our machinery and vehicles conform to the strict specifications required for operation across various sectors. This meticulous adherence to industry standards assures that our equipment not only meets but exceeds the rigorous expectations of our clients, offering a reliable and high-quality solution for your project's needs.





Controlled Waste

COMPLETE WASTE & POTABLE SUPPLY SOLUTIONS

Byblos Group is recognised for its exceptional waste management services across the Pilbara. We've been chosen by industry leaders including Rio Tinto, Monadelphous, Civmec, Leighton Holdings, and OTOC for liquid waste management and wastewater treatment operations, supporting up to 1000 personnel.

Our dedication to environmental stewardship and efficient controlled waste handling underscores

our reputation. We provide essential emergency and callout services, ensuring rapid response to any waste management emergency, thereby maintaining project continuity and client peace of mind.

SKIP BIN SUPPLY & COLLECTION:

- Complete skip waste solution
- 12m3 skip bin supply and collection
- Highly experienced waste collection operators

CONTROLLED WASTE REMOVAL (CW T286):

- 3 x Bulk Controlled Waste Removal trucks, available to collect and transport waste from any Pilbara location
- Highly experienced controlled waste operators
- Fully site compliant equipment, ready to mobilise
- Controlled waste tracking and disposal

- Sewage / septage / grease waste, industrial wash water, soils and sludge

POTABLE WATER SUPPLY:

- 3 x potable water supply trucks / tanks, up to 10,000L capacities
- Water quality lab testing, competed by a NATA approved laboratory
- Fast response available

Hazardous Category of Waste

Fully compliant with all regulatory requirements, our team excels in waste tracking and implementing effective waste management systems. Our fleet includes three bulk-controlled waste removal trucks operated by skilled professionals, equipped for immediate deployment across the Pilbara.

Offering services from controlled waste tracking and disposal to the management of various waste types, we are equipped to meet the most stringent waste management needs with unparalleled efficiency and compliance.



Electrical

WE HAVE YOUR ELECTRICAL NEEDS COVERED

Quality electrical services are at the core of what we offer, delivered by a team of skilled and licensed electricians. We prioritise high-quality work and follow strict standards to ensure every job is done right the first time.

No matter the size of the job, our team is equipped to provide the precise solution required. Our electricians boast extensive experience in the mining and resources sector, familiar with the specific demands of shut down experience and all mine site compliance requirements.

TOTAL REFRIGERATION SERVICES:

We are fully licenced and experienced in all manner of refrigeration systems. Our highly capable refrigeration technicians can design, install and maintain the systems you rely on in the Pilbara, including:

- Maintenance & new installations
- HVAC Systems
- Split systems AC
- Commercial and industrial refrigeration

Electrical Needs

In the mining sector, our services include electrical infrastructure installation and upgrades, switchboard maintenance, test and tag, data and communications maintenance, instrumentation installations, IR testing of switchboards for compliance, and lighting solutions.

Commercial Infrastructure

For commercial needs, we offer solutions like stand-alone solar lighting, warehouse lighting upgrades, compliance testing, CCTV installations, and split system A/C installations.

Our domestic services are comprehensive, from cabling and wiring, lighting, and communication installations to switchboard upgrades, compliance testing, TV outlets, aerial installations, and repairs of HWUs and stoves, meeting every household electrical requirement.





Plumbing and Gas

SOLUTIONS TO PLUMBING AND GAS

We provide a comprehensive range of plumbing and gas fitting services, backed by a team of highly skilled, experienced, and fully licensed professionals. Our expertise spans both major civil plumbing projects and all aspects of domestic plumbing and gas fitting, ensuring we're equipped to tackle any job with confidence and proficiency.

Our services include the installation and maintenance of water, sewer, and drainage systems, jet spraying to clear blockages, and the setup of fire water systems, tanks, and pump systems. We also specialise in the installation of hot water units and water filtration systems as well as catering to all domestic plumbing requirements including reticulation systems and gas fitting.

PLUMBING SERVICES INCLUDE:

- Commercial plumbing—system design & implementation
- Water, sewer & stormwater drains
- Asbestos water main/lagging removal & replacement
- Reticulation systems
- Polywelding—butt & electrofusion
- Domestic plumbing & HWU installations
- Jetspraying & drain cleaning
- RO units
- Gasfitting

Addressing the Issue Before it Happens

For commercial projects, we provide system design and implementation, addressing water, sewer, and stormwater drainage needs. Our services extend to the safe removal and replacement of asbestos water mains/lagging, poly welding (butt and electrofusion), domestic plumbing installations, HWU setups, drain cleaning, and reticulation systems, all carried out with the utmost precision and safety compliance.



Mine Services

A WIDE RANGE OF NEEDS

We are fully equipped to meet the rigorous demands of the mining sector. Across the Pilbara, we've delivered top-quality services to some of the largest names in mining. Our extensive experience ensures we understand your requirements, expectations, and all necessary mine site compliance standards.

Our company is committed to making project mobilisation and execution both effective and seamless. We're dedicated to not just meeting but surpassing our clients' expectations.

OUR MINE SERVICES INCLUDE:

- Civil works
- Construction
- Electrical works
- Waste Management
- Labour Hire
- Building maintenance
- Plumbing
- Infrastructure upgrades
- Concreting



A Wide Range of Needs

Our vast experience means we understand your needs, your expectations and all mine site compliance requirements. Our business will make project mobilisation & execution an effective & smooth process. We know what it takes to get the job done & aim to exceed all of our client's expectations.





Labour Hire

THE WORKFORCE THAT YOU ASKED FOR

You can hire the labour necessary to efficiently complete your project from Byblos Group. We have an advantage in the Pilbara labour hire market because we are committed to providing quality, highly trained workers and our clients have recognised this dedication which has led to clients repeatedly choosing our services for their labour needs.

THE RIGHT PEOPLE FOR THE JOB:

- Short term
- Casual
- Long Term
- Skilled, experienced and qualified



A Stable Workforce

Our workforce is stable and experienced, not temporary or unreliable. We are proud of our team's extensive experience and deep understanding of Pilbara operations. We have a strong focus on personnel development which has equipped our staff with the skills and initiative required to work independently or seamlessly integrate with your project team.

OUR LEADERSHIP



JOHN KEARNEY

CONSTRUCTION MANAGER

John, leader of Byblos Constructions, excels in construction management, innovation, and quality. He fosters strong client relationships and a results-driven culture, ensuring projects meet client goals and industry standards.



BRETT HARRAP

HSEQ MANAGER

Brett is an HSEQ Manager with 14 years' experience in construction and mining, specialising in WHS, risk management, and safety cultures. He is skilled in team leadership, client management, and aligning HSEQ goals with successful project outcomes.



TRACY OLIVER

FINANCE MANAGER

Tracy is a financial leader at Byblos Constructions, providing strategic insights and ensuring financial considerations are integrated into projects. Her expertise in compliance and leadership is key to the company's success.



ROBERT MANGAN

TOM PRICE OPERATIONS MANAGER

Since joining in 2021 as a Construction Supervisor, he has applied extensive carpentry experience and expertise in residential and civil construction. Rob's leadership and focus on safety and collaboration drive Byblos' success in the Tom Price and Paraburdoo branches.



SHANE KING

REGIONAL MANAGER

Shane, Regional Manager at Byblos Constructions, brings 20+ years of construction experience, from plumber to leadership. He oversees Pilbara operations, leads a local squash club, and values family life. His dedication makes him a key asset to Byblos.



BRAD FIORI

PARABURDOO OPERATIONS MANAGER

Brad is an Operations Manager with 20+ years in construction, specialising in the Pilbara. His expertise includes plumbing, mining infrastructure, and project management, with a focus on safety and client satisfaction. Brad is known for his leadership, high standards, and community involvement in youth sports and local football.



JARROD TURKINGTON

SENIOR PROJECT MANAGER

Jarrod has been with Byblos for 14 years, progressing from carpenter to Senior Project Manager. He has led major projects across Paraburdoo, Tom Price, and Perth and helped establish the Byblos Projects Division in 2022/23. Jarrod is highly skilled in project management, budget control, and safety.

TOM PRICE HQ

Lot 4 Mine Road,
Old LIA, Tom Price WA 6751

PO Box 599, Tom Price WA 6751

P: +61 8 9188 1488

E: admin.tp@byblosgroup.com.au

PARABURDOO HQ

8 Turee Way,
Paraburdo WA 6754

PO Box 292, Paraburdo WA 6754

P: +61 8 9189 5637

E: admin.para@byblosgroup.com.au

PROJECTS DIVISION

Unit 5/190 Abernethy Road
Belmont WA 6104

PO Box 369, Cloverdale WA 6985

P: +61 8 9478 3777

E: reception@byblosgroup.com.au



Our Trusted Partners & Clients

